



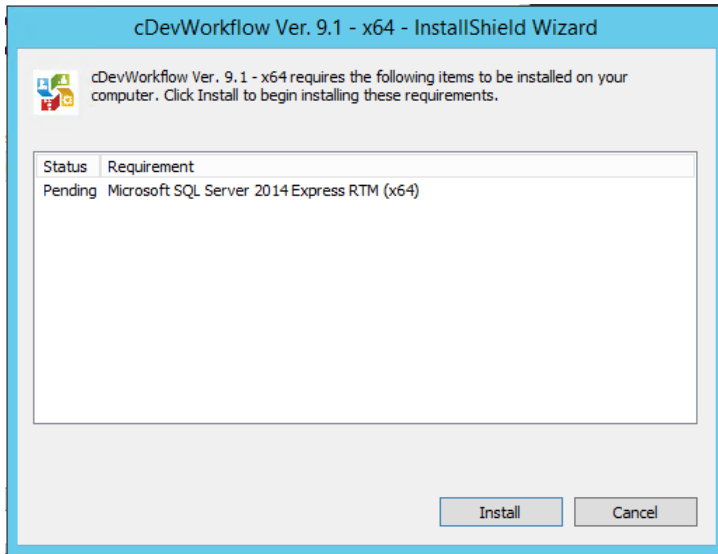
# Installation Guide

## Version 9.1

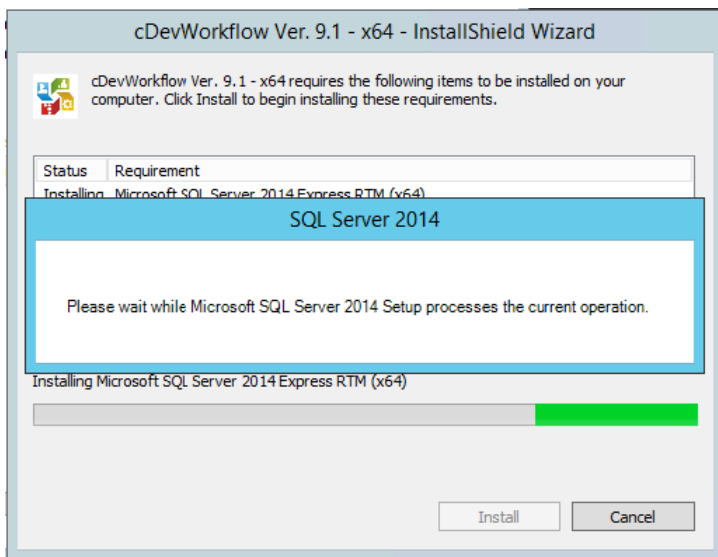
2016

## Installation Guide Version 9.1

1. Download the cDevworkflow Package and double click on the “cDevWorkflow9.1-x64” icon. An installation Wizard window is displayed as shown below:

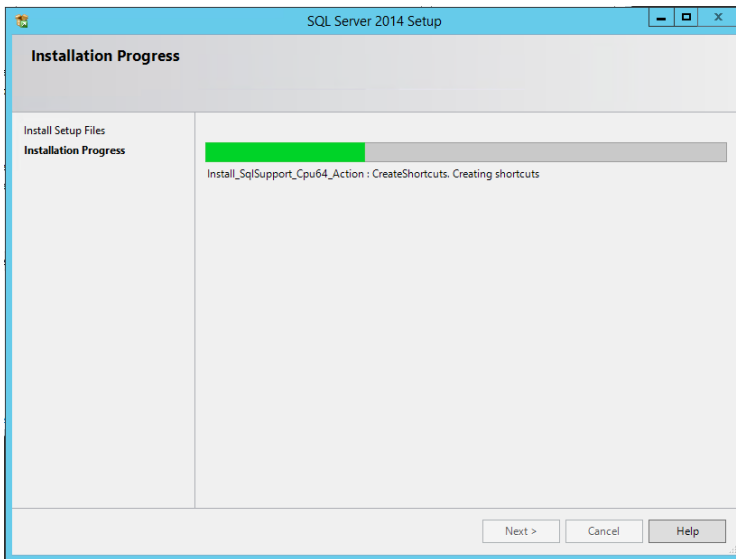


2. Click the “Install” button to start the installing the pre-requisites. Installer will first install an instance of Microsoft SQL Server express, as shown below:

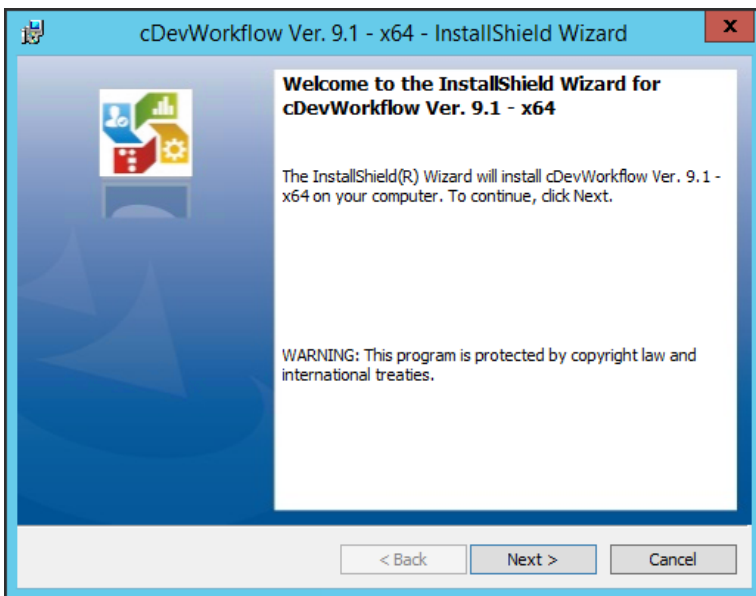


## Installation Guide Version 9.1

The SQL Server 2014 Setup process will begin as shown below:

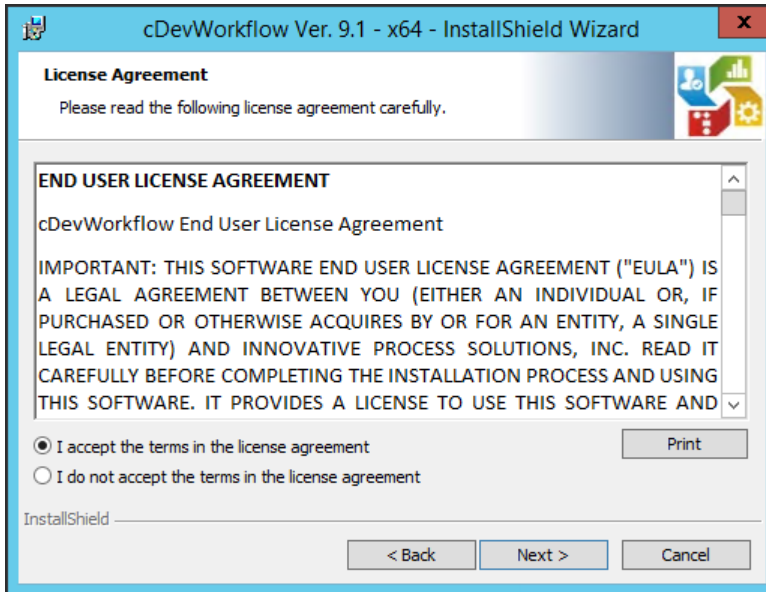


3. On successful completion of the SQL server 2014 Setup, a “cDevWorkflow9.1-x64” Installation user interface will be displayed. Click on the “Next” button to continue the installation.

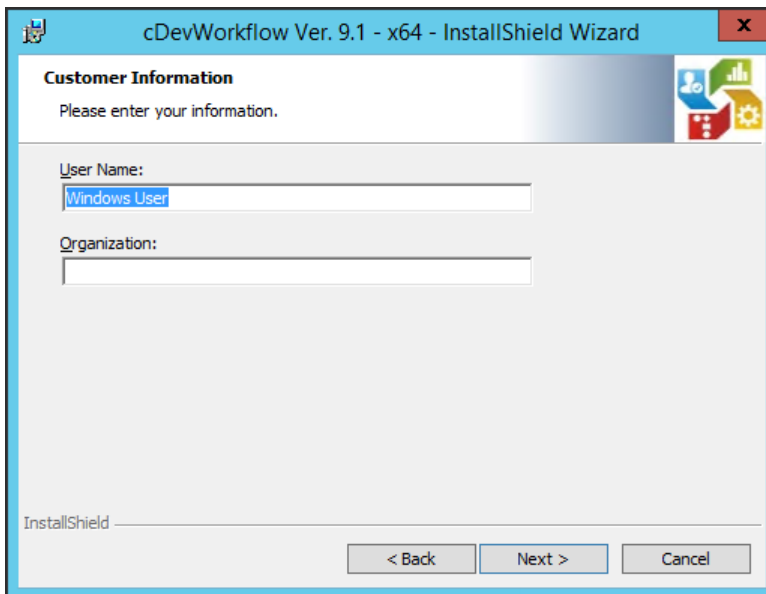


## Installation Guide Version 9.1

4. Next, the License Agreement window is displayed, select the “I accept the terms in License agreement” radio button and click on the “Next” button.

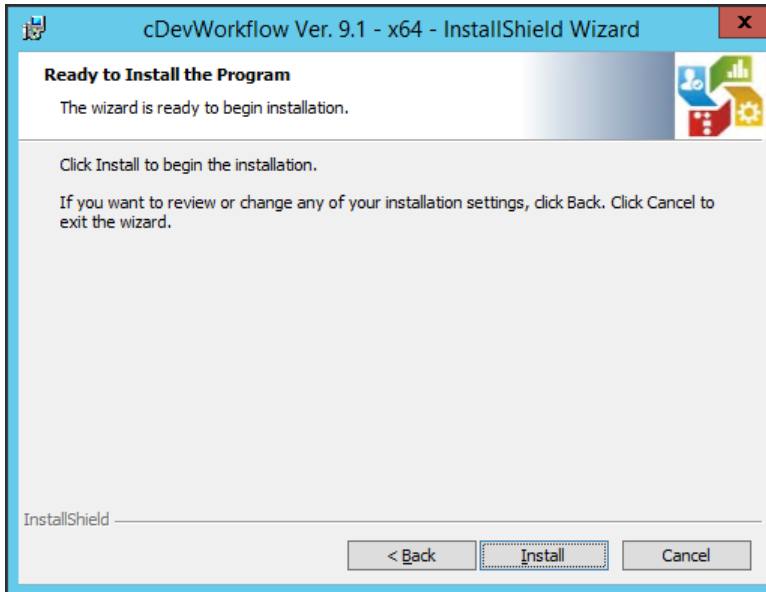


5. Enter the “User Name” and “Organization” name in the “Customer Information” window and click on “Next” button.

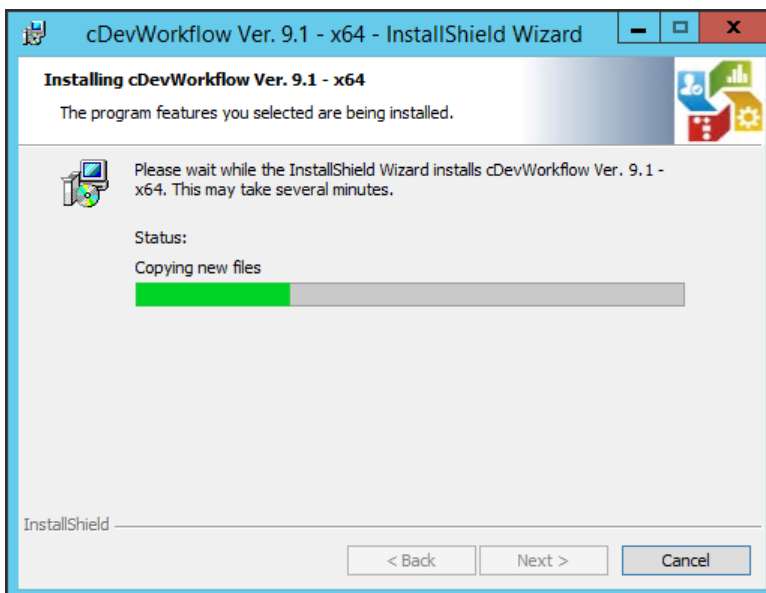


## Installation Guide Version 9.1

6.The “cDevWorkflow9.1-x64” Installation wizard shield is displayed, click on the “Install” button to begin the cDevWorkflow installation.

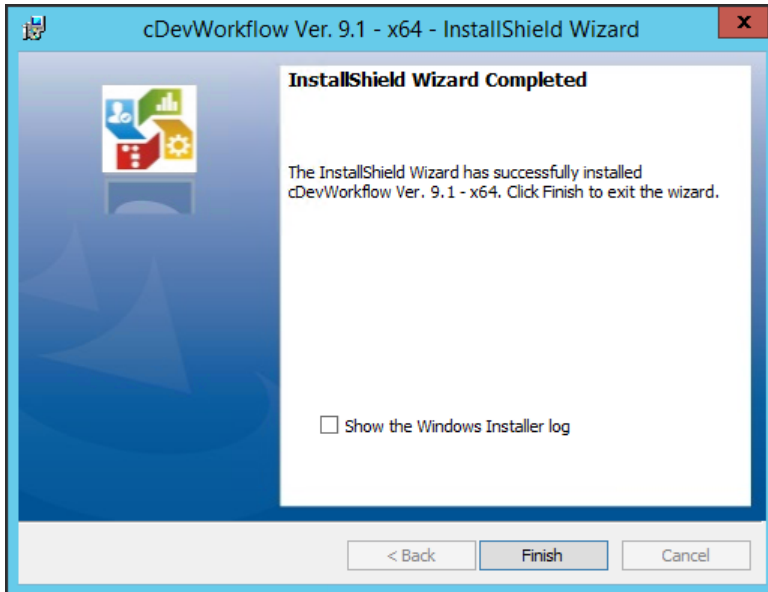


The installation process begins as shown below:

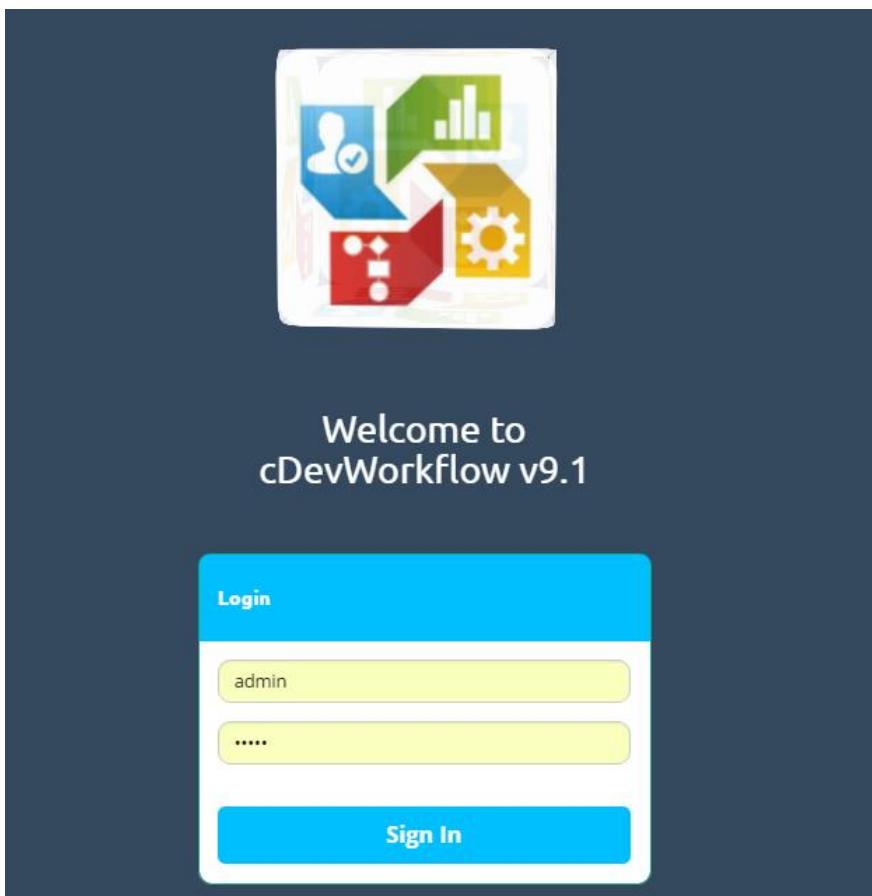


## Installation Guide Version 9.1

7. The installation is completed successfully and the cDevWorkflow 9.1 application is launched as shown below:



8. Click the "Finish" button to launch the cDevWorkflow Application.



An Icon is also placed on the Start menu and also on the Desktop as shown below:

## Installation Guide Version 9.1

